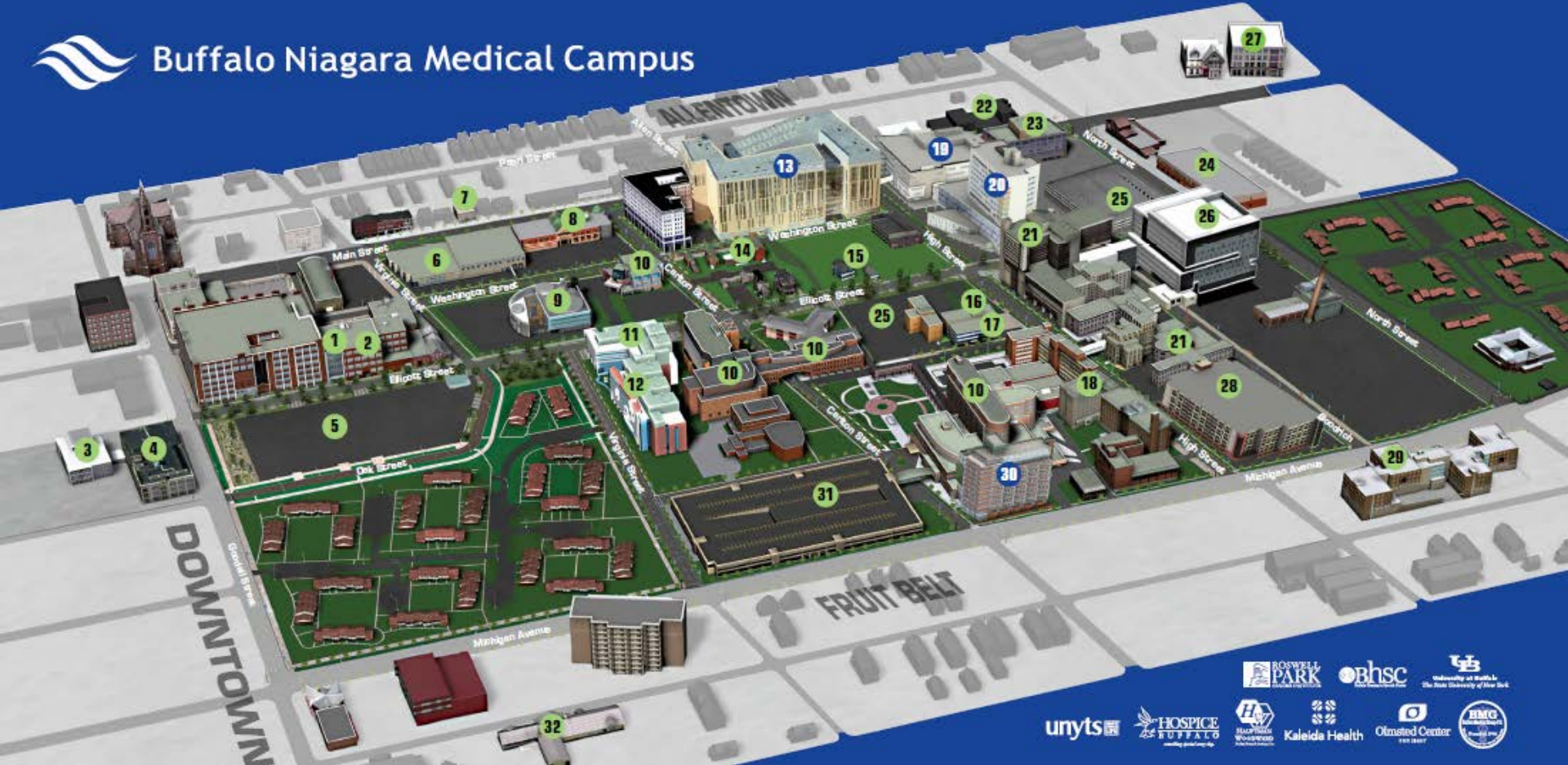




**GOBNIMC**  
Buffalo Niagara Medical Campus

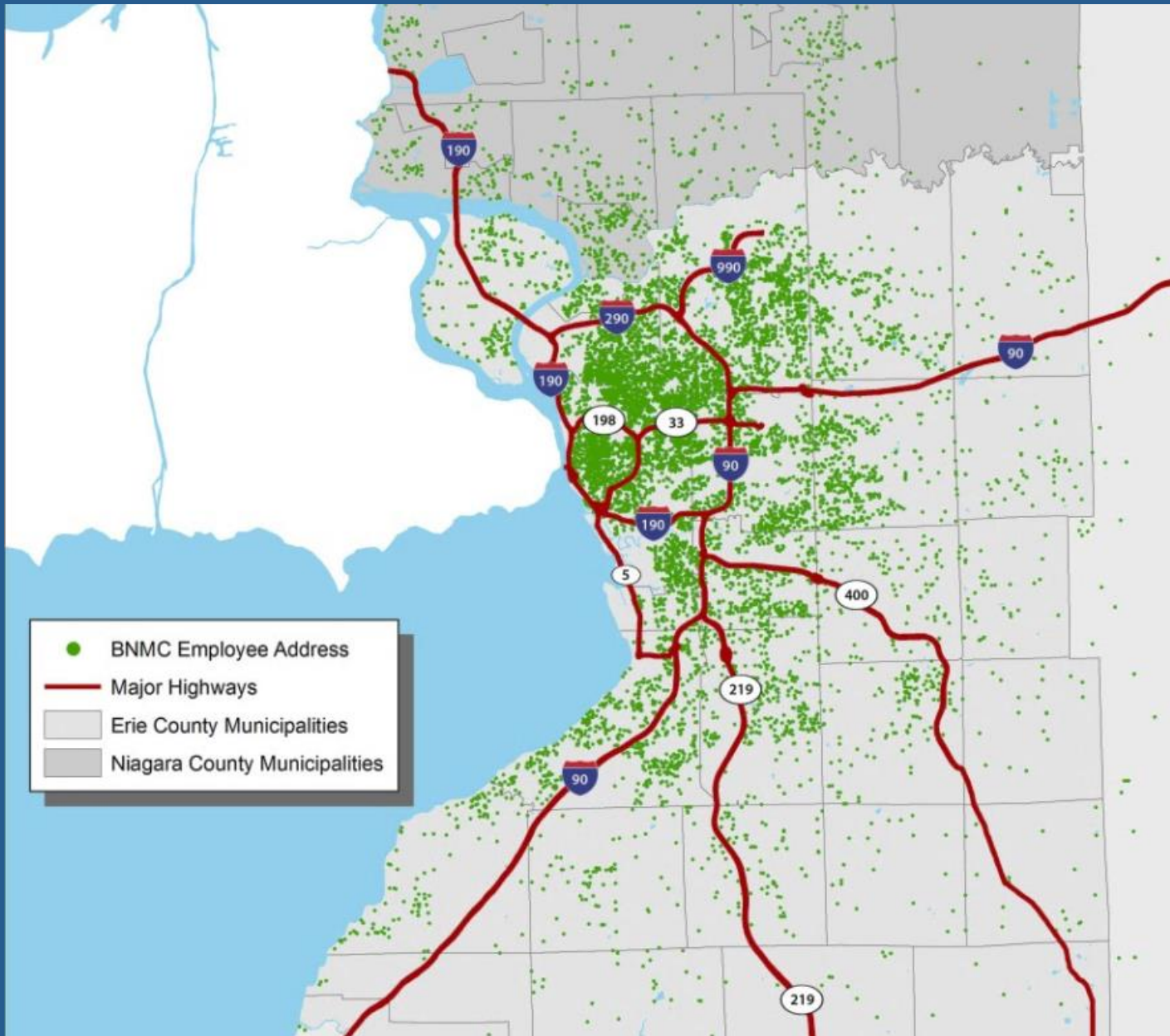


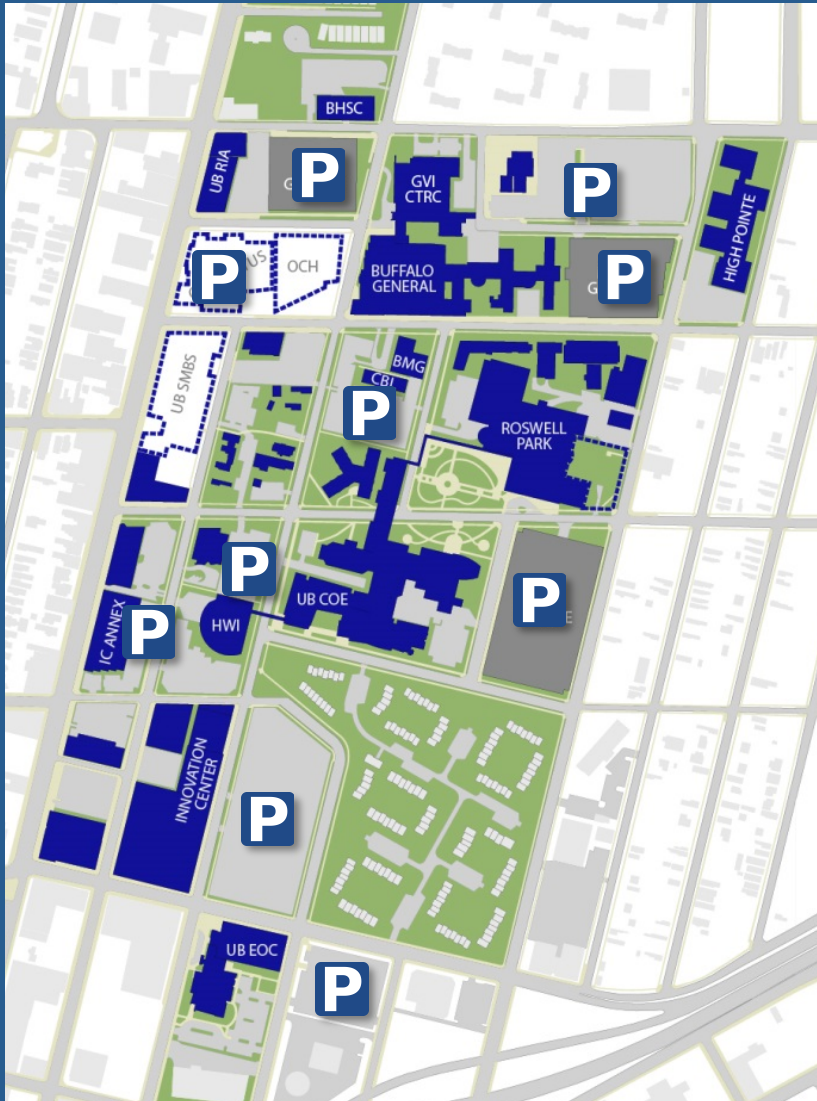
# Buffalo Niagara Medical Campus



unyts







# BNMC Transportation Management Association

BNMC Member Institutions

**Niagara Frontier Transportation Authority**

City of Buffalo Department of Public Works

City of Buffalo Office of Strategic Planning

**Greater Buffalo Niagara Regional Transportation Association**

New York State Department of Transportation

New York State Energy Research and Development Authority

**GObike Buffalo**

Buffalo BikeShare/Reddy Bikes

Shared Mobility, Inc.

Allpro Parking, LLC.

Zipcar

## 2012 Employee Mode Share

<b>Drive Alone:</b>	<b>88%</b>
Carpool:	5%
Bus:	2%
Light Rail:	2%
Walk:	1%
Bike:	2%

## 2015 Employee Mode Share

<b>Drive Alone:</b>	<b>83%</b>
Carpool:	8%
Bus:	3%
Light Rail:	2%
Rail and Bus:	2%
Walk:	1%
Bike:	1%

# Key Initiatives

## Careful Management of Parking Supply



# Key Initiatives

## Careful Management of Parking Supply





# Key Initiatives

## Increase Alternative Commuting

The screenshot shows the homepage of the GOBNMCM website. At the top left is the logo for GOBNMCM, with "GO" in green and "BNMCM" in blue, and "Buffalo Niagara Medical Campus" below it. To the right of the logo are navigation links: "ABOUT US", "CONTACT US", and "EMPLOYER POLICIES". Further right are social media icons for Facebook, Twitter, and LinkedIn, and a green button labeled "BECOME A MEMBER". Below the navigation is a dark blue horizontal menu with five items: "LIVE" (with a person icon), "BIKE" (with a bicycle icon), "RIDE" (with a bus icon), "CARPOOL" (with a car icon), and "PARK" (with a 'P' icon). The main content area features a large image of a modern glass building. Overlaid on the bottom right of this image is a white call-to-action box with the text: "WELCOME TO GO BNMC!" in bold blue, followed by "We're here to help you with your commuting choices. Explore our new website to learn more!" in a smaller blue font. Below the image is a green banner with four white circles, the first of which is filled. The banner contains the text "JOIN THE MOVEMENT" in large white letters, and below that, "The Buffalo Niagara Medical Campus is inviting you to join the growing number of employees who are choosing healthier, greener and more affordable ways to get to work." in white text.

**GOBNMCM**  
Buffalo Niagara Medical Campus

ABOUT US CONTACT US EMPLOYER POLICIES [BECOME A MEMBER](#)

[LIVE](#) [BIKE](#) [RIDE](#) [CARPOOL](#) [PARK](#)

**WELCOME TO GO BNMC!**  
We're here to help you with your commuting choices.  
Explore our new website to learn more!

**JOIN THE MOVEMENT**

The Buffalo Niagara Medical Campus is inviting you to join the growing number of employees who are choosing healthier, greener and more affordable ways to get to work.

# Key Initiatives

## Increase Alternative Commuting



ABOUT US CONTACT US EMPLOYER POLICIES BECOME A MEMBER

LIVE BIKE RIDE CARPOOL PARK



LIVE

HOME / LIVE



ABOUT US CONTACT US EMPLOYER POLICIES BECOME A MEMBER

LIVE BIKE RIDE CARPOOL PARK



BIKE

HOME / BIKE



ABOUT US CONTACT US EMPLOYER POLICIES BECOME A MEMBER

LIVE BIKE RIDE CARPOOL PARK



METRO RAIL & BUS

HOME / RIDE



ABOUT US CONTACT US EMPLOYER POLICIES BECOME A MEMBER

LIVE BIKE RIDE CARPOOL PARK

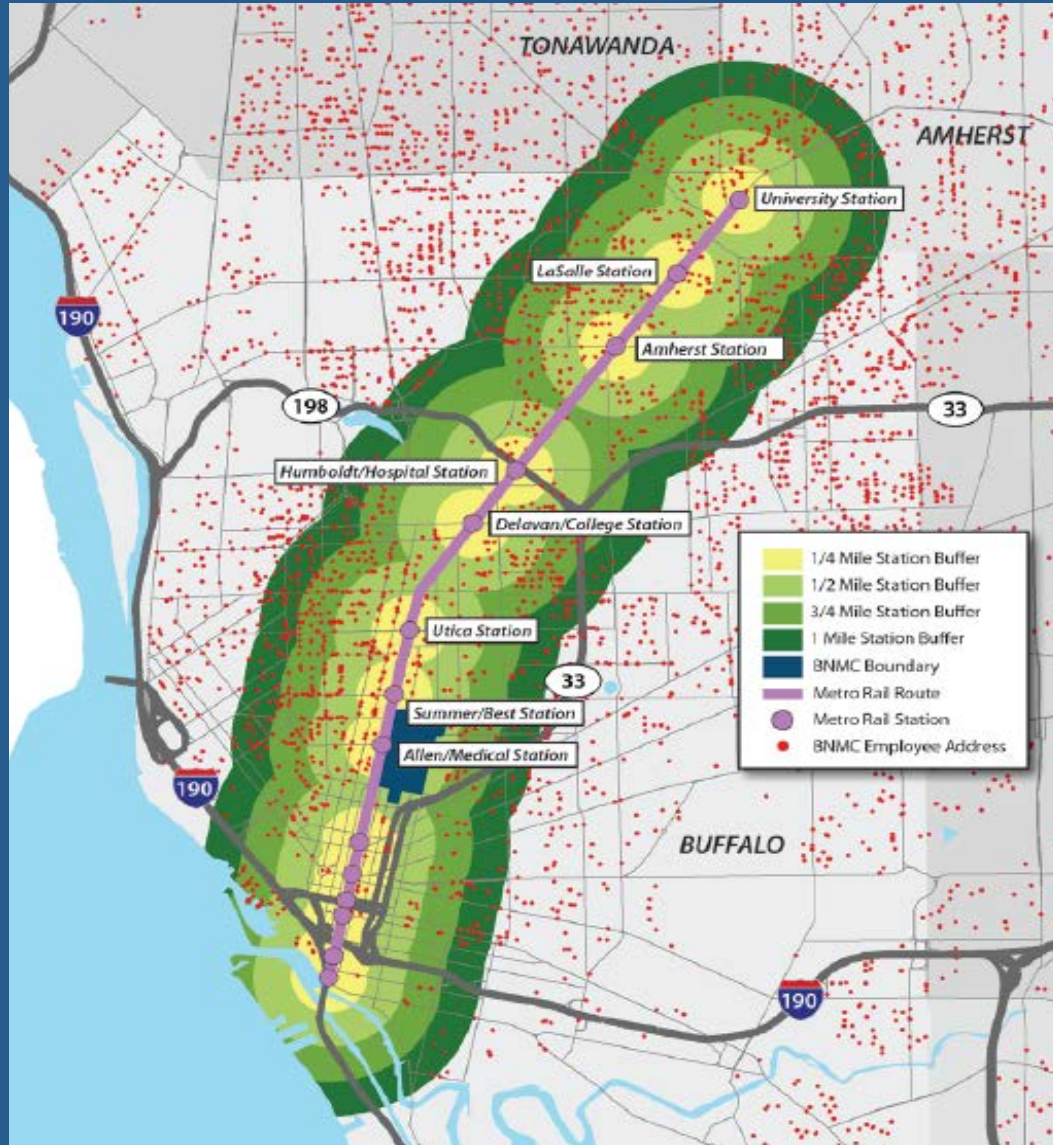


CARPPOOL

HOME / CARPOOL

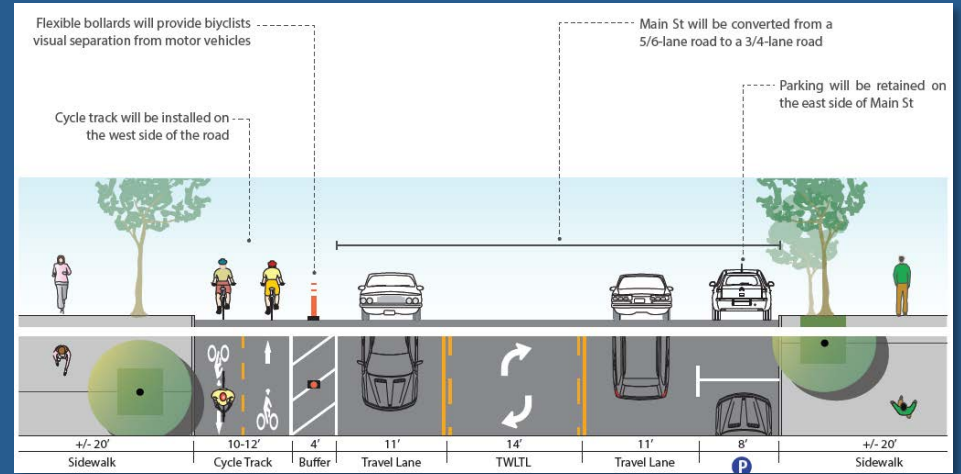
# Key Initiatives

## Increase Alternative Commuting



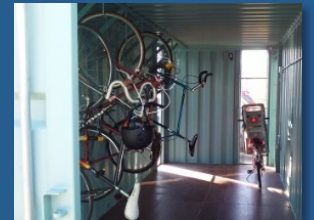
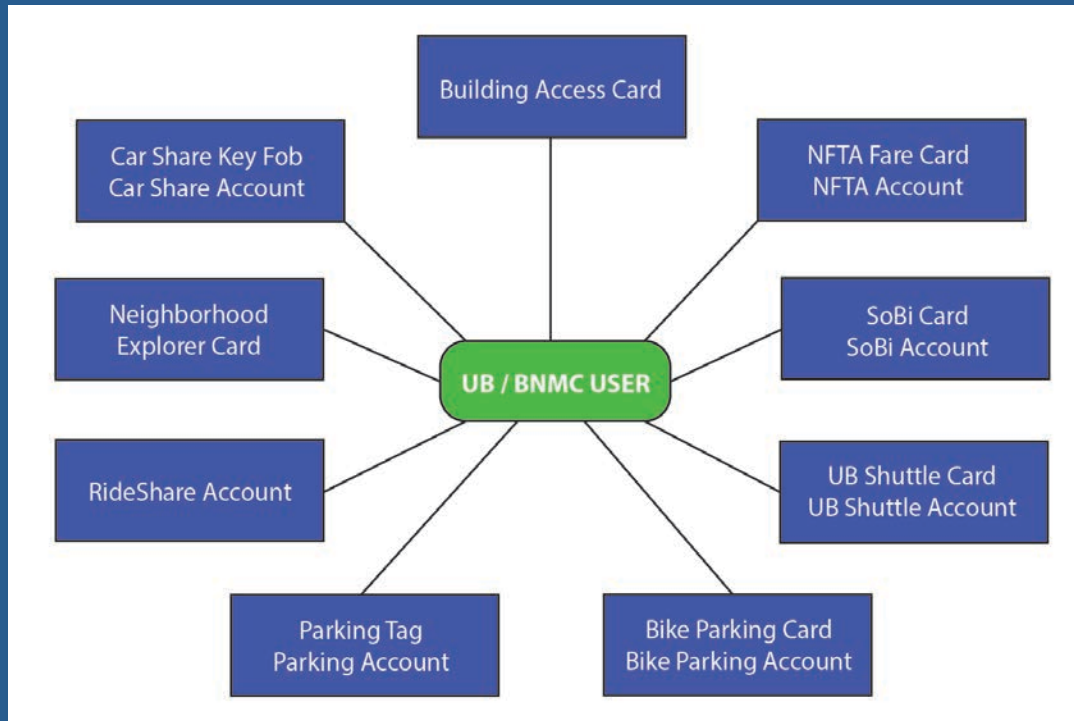
# Key Initiatives

## Improving Infrastructure



# Key Initiatives

## Integrated Parking and Transportation System



# Key Initiatives

A Centralized Location/Mobility Hub



# Key Initiatives

Participate in Developing a Regional TMA

**GO** BUFFALO  
NIAGARA





## Thank You!

Bill Smith

Director of Campus Access

Buffalo Niagara Medical Campus, Inc.

640 Ellicott Street, Suite 400

Buffalo, New York 14203

(716) 218-7155

[wsmith@bnmc.org](mailto:wsmith@bnmc.org)

[www.bnmc.org](http://www.bnmc.org)